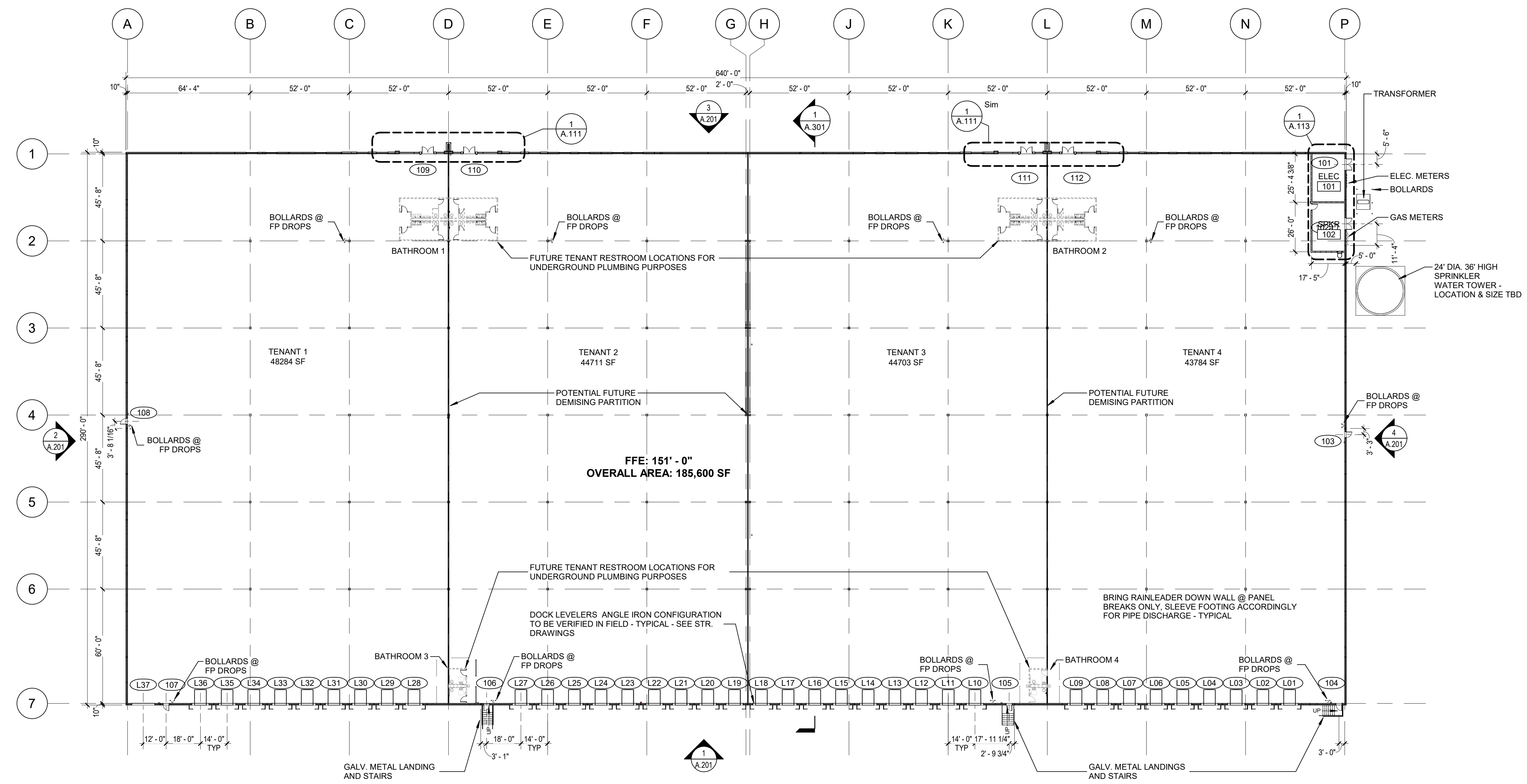


Notes:

- DIMENSIONING NOTES**
1. EXTERIOR MASONRY WALLS ARE DIMENSIONED TO THE FACE OF MASONRY
 2. INTERIOR MASONRY WALLS ARE DIMENSIONED TO THE FACE OF MASONRY
 3. WOOD FRAMED EXTERIOR WALLS ARE DIMENSIONED TO THE EXTERIOR FACE OF STUD.
 4. INTERIOR PARTITIONS ARE DIMENSIONED TO THE CENTERLINE, UON

FIRE EXTINGUISHER	
FE-1	SURFACE MOUNT FIRE EXTINGUISHER, JL INDUSTRIES COSMIX 5X
FE-2	RECESSED FIRE EXTINGUISHER-1-1/2" TRIM, JL INDUSTRIES COSMIX 5X, CABINET #1826G17, MILL FINISH



1 FIRST FLOOR PLAN OVERALL
SCALE: 1/32" = 1'-0"

Architect's Stamp:

Project:
205 Baker Hollow Rd

205 Baker Hollow Rd
Windsor, CT 06095

Client:
Condyne Capital Partners

100 Grandview Rd Braintree, MA

Project #: 23023

Scale: As indicated

Issue: DESIGN DEVELOPMENT
Date: 04/25/2023

Revisions: _____
Date: _____

Drawing Title:
FIRST FLOOR PLAN

Sheet Number:

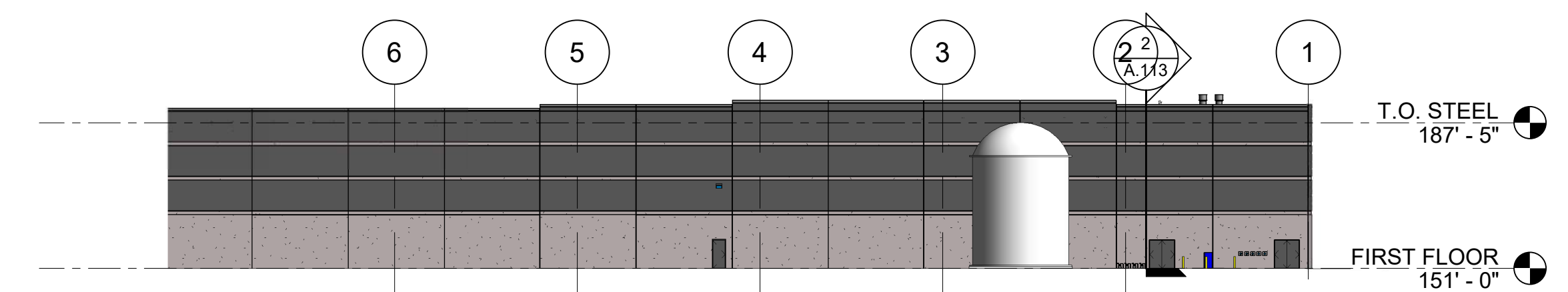
A.101



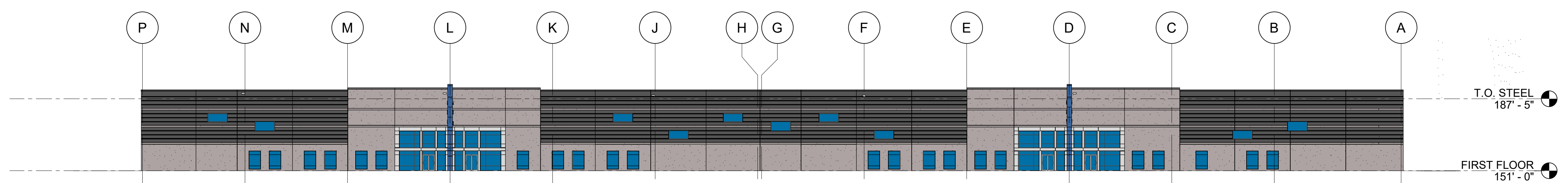
THESE DOCUMENTS AND ALL REAR, ARRANGEMENTS, DESIGNS AND PLANS INCORPORATED HEREIN OR REFERENCED THEREIN ARE OWNED BY AND REMAIN THE PROPERTY OF MAUGEL DESTEFANO ARCHITECTS, INC. AND NO PART THEREOF SHALL BE REPRODUCED OR TRANSMITTED IN ANY FORM OR BY ANY MEANS, ELECTRONIC OR MECHANICAL, INCLUDING PHOTOCOPYING, RECORDING, OR BY ANY INFORMATION STORAGE AND RETRIEVAL SYSTEM, WITHOUT THE WRITTEN PERMISSION OF MAUGEL DESTEFANO ARCHITECTS, INC.

Notes:

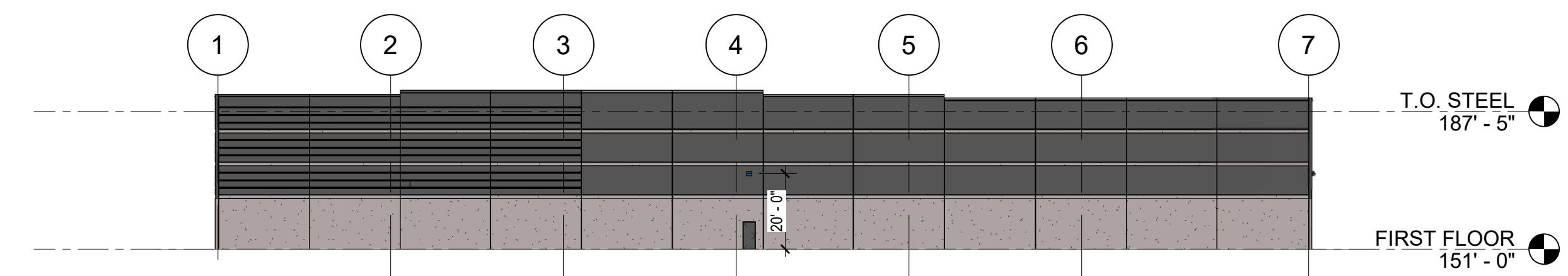
- EXTERIOR WINDOW FRAMING & GLAZING**
- GENERAL WINDOW NOTES:**
- ALL DIMENSIONS SHOWN ON ARCHITECTURAL DRAWINGS ARE ROUGH OPENINGS. SHOP DRAWINGS SHOULD REFLECT APPROPRIATE FRAME SIZES INCLUDING JOINT SIZES PER MANUFACTURERS SPECIFICATIONS
 - G.C./SUB-CONTRACTOR TO FIELD VERIFY ALL OPENINGS PRIOR TO FABRICATION OF WINDOWS
 - SUBMIT COLOR SAMPLES FOR FRAMES AND GLAZING AS PART OF THE SHOP DRAWINGS PROCESS
- STOREFRONT SYSTEM:**
- KAWNEER 1600 SYSTEM - FRONT GLAZED
 - FRAME COLOR - CLEAR ANODIZED ALUMINUM
- CURTAINWALL SYSTEM:**
- KAWNEER 1600 SYSTEM - 7-1/2" FRAME DEPTH
 - STEEL REINFORCING BY FABRICATOR DURING SHOP DRAWINGS AS REQUIRED TO MEET MANUFACTURE SPECIFICATIONS AND WIND LOAD REQUIREMENTS
 - FRAME COLOR - CLEAR ANODIZED ALUMINUM
- STOREFRONT & CURTAINWALL ENTRANCES**
- DOORS: KAWNEER 350 MEDIUM STILE
 - PANIC PUSH BAR (DOUBLE DOORS): DOOR-O-MATIC #1690 CONCEALED VERTICAL ROD
 - PANIC PUSH BAR (SINGLE DOOR): DOOR-O-MATIC #1790 RIM EXIT DEVICE
 - PUSH BAR AT NON-LATCHING DOORS: STYLE CO-12/CP11
 - PULLS: STYLE CO-12
 - CLOSER: NORTON 1605 BC, PARALLEL ARM MOUNTING W/ HEAVY DUTY ARM & HOLD OPEN
 - THRESHOLD: ALUMINUM THRESHOLD 1/2" MAX HEIGHT (ADA)
- GLAZING:**
- ALL GLAZING TO BE LOW E-II
 - PROVIDE TEMPERED GLAZING IN ALL AREA REQUIRED BY CODE.
- GLAZING COLORS:**
- G1: 1" INSULATED CLEAR ECLIPSE ADVANTAGE (LOW E)
 - 1/4" CLEAR ECLIPSE ADVANTAGE (LOW E SURFACE #2)
 - 1/2" ARGON
 - 1/4" CLEAR ANNEALED
- G2: 1" INSULATED CLEAR ECLIPSE ADVANTAGE (LOW E) SPANDREL
 - 1/4" CLEAR ECLIPSE ADVANTAGE (LOW E SURFACE #2)
 - 1/2" ARGON
 - 1/4" CLEAR ANNEALED (SPANDREL COATING SURFACE #4)
- P1: METAL PANEL - ALUMINUM



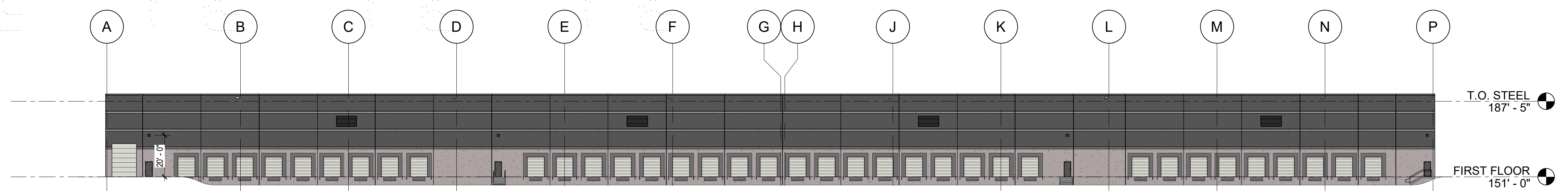
4 EXTERIOR BUILDIN ELEVATION - EAST
SCALE: 1/32" = 1'-0"



3 EXTERIOR BUILDIN ELEVATION - NORTH
SCALE: 1/32" = 1'-0"



2 EXTERIOR BUILDIN ELEVATION - WEST
SCALE: 1/32" = 1'-0"



1 EXTERIOR BUILDIN ELEVATION - SOUTH
SCALE: 1/32" = 1'-0"

Architect's Stamp:

Project:
205 Baker Hollow Rd
Windsor, CT 06095

Client:
Condyne Capital Partners

100 Grandview Rd Braintree, MA

Project #: 23023

Scale: As indicated

Issue: DESIGN DEVELOPMENT **Date:** 04/25/2023

Revisions: **Date:**

Drawing Title:
EXTERIOR ELEVATIONS

Sheet Number:

A.201



200 AYER ROAD | SUITE 200
HARDWARE, MA 01943
978 456 2800
MAUGEL.COM