

**PARKING LOT ADDITIONS & RENOVATIONS
POQUONOCK SCHOOL
WINDSOR, CT**

**ADDENDUM NO.2
January 31, 2020**

QUESTIONS FROM CONTRACTORS/SUBCONTRACTORS AND CORRESPONDING ANSWERS:

Email from Four Seasons Landscaping, Inc.

Question 1: Budget for Project – has the town established a budget cost?

Response: Engineer’s estimate for the project (including add alternates) is \$375,000.

Question 2: Solar powered light poles shown on Sheet C-3.2. Don’t see spec on detail on poles.

Response: See attached product information sheet.

Question 3: Playground mulch – states to stockpile for reuse – how will you handle if not sufficient quantity of mulch to cover new playground areas.

Response: Town will supply supplemental mulch for the new playground areas.

Question 4: Existing light poles – we remove, stockpile and re-install existing on new base?

Response: Correct.

Question 5: Schedule: 60 days could be tight with set hours and M-F. Would extended hours and weekend work be permitted if project is delayed by weather etc.?

Response: Extended hours and weekend work will be considered by the Town to ensure the project is substantially complete by August 20, 2020.

Question 6: Plan holder list will be provided?

Response: Plan holder list is available via Advanced Reprographics under the Plan Holders tab on the following webpage:
<https://www.advancedplanroom.com/jobs/906/details/poquonock-school>

Attachments

SolarOne®

RFS Performance 300

Project Information

Quick Facts	
Applications	Parking Lots
Distribution Types	IES Types 2M,2S,3M,3S,4,5
Color Temperature	3000K,4000K
Lumen Range	4,194- 4711 per Fixture
Pole Height / Mounting Height	20'/18' ((For 20' Mounting Height Use 30" Raised Footing)
Battery Type	Absorbed Glass Mat
Finish (Standard Colors)	Standard Colors: Black, Bronze, White
Warranty	10-Year System & 5-Year Battery /Optional 10-Year Battery



Overview

The RFS Performance 300 includes twin luminaires and is optimized for parking lot lighting. The adjustable panel mounting, flat panel and SO-Bright® MPT-15 Controller maximize energy collection. The luminaire's wide selection of high efficiency optics will help you to get the most out of your system in terms of spacing and uniformity. This all-inclusive solution is easy to specify and simple to install. An LCU (Local Area Control Unit) is included with every project. You can perform a wide range of adjustment, diagnostic and commissioning tasks without a lift and without opening the enclosure. The system carries a 10-year system warranty and 5-year battery warranty.

No Trenching & Wiring Cost | Easy Installation | Carbon-Free | Keeps Working During Power Outages

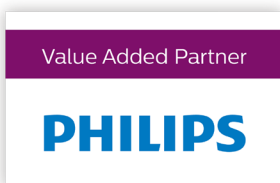
Design

SolarOne will support your planning or specification process with energy balance calculations, lighting design, and a shading evaluation specific to your project location. This Virtual Site Analysis (VSA) is custom for every project so you can see the details behind the recommendation.

Our analysis is based on industry standards such as IES & CIE, credible climate data sources like NASA & NREL, and over ten years of LED Solar Powered Lighting field experience with municipalities, military bases, and industrial facilities.

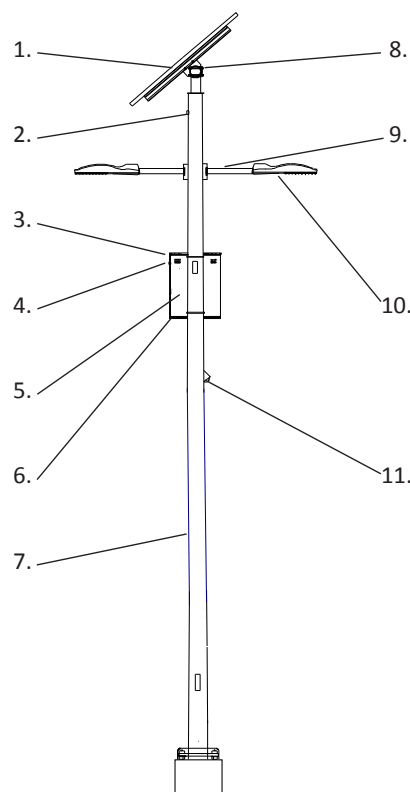
SO-Bright® Controller

The SO-Bright® MPT-15 Controller provides wide flexibility, system protection and increased energy collection. The system provides best in class charging and extra benefits like snow/sand coverage protection and adjustable charging algorithms to allow you to use a range of battery types in the future. The controller comes pre-programmed for your environment and preferences but can be easily reprogrammed using the remote control included with every project. Local control does not require data plans, subscriptions or internet connection. For greater control and alert communications, SolarOne can provide SOFi Wireless Networking, using either cellular or network connections.



Product Details

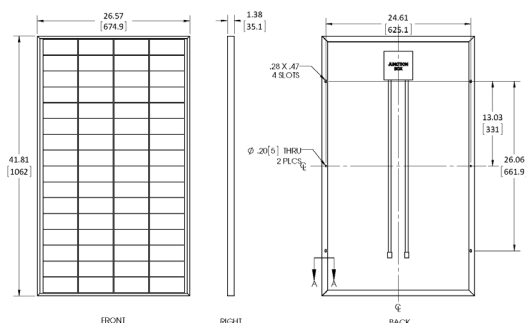
1. Two solar panels UL1703-Class 1 Div. 2 Hazardous Location Listing
2. Water-Tight Wireway
3. IR Sensor-Tool free communication with LCU control unit
4. SO-Bright® MPT-15 ETL recognized controller with maximum power tracking collects up to 30% more energy, particularly in the winter months. RTE Energy Management ensures reliable service. The SO-Bright® MPT-15 controller delivers maximum flexibility in lighting levels, lighting hours and energy management. Contact your SolarOne® Solar Lighting Specialist to see what this system can do in your location.
5. VRLA AGM Deep Cycle Batteries – Non-proprietary, non-spillable, maintenance-free Absorbed Glass Mat Technology. (Rated cycle life of 5K @ 10% DOD)
6. E-Series Pole Mounted NEMA 3R Enclosure, Powder Coated to Match
7. 20' Tapered Round Steel Pole - Powder Coated (Galvanized Adder Available)
8. Adjustable solar mounting ensures optimal tilt for maximum energy collection.
9. Two 1' Straight Arms with Simplex Mount
10. Two RFS G2 38W LED Fixture - 4674 Lumens (T2S-4K) with high efficiency, IP66 light engine
11. Motion Detector - Optional



Panel Specifications

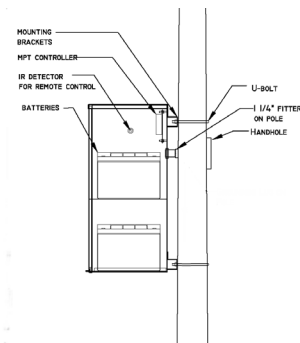
For 20' mounting height use 30" AG footing.

Solar Assembly	2P150A
Nameplate Power	300W
Panel Dimensions	59.1 X 53.2 X 1.97 in (1500 x 1351 x 50 mm)
EPA (@ 45° Tilt)	14.6 sq-ft (1.36 sq-m)
Weight Panel	53.0 lbs (24.0 kg)
Weight Mount	53.0 lbs (24.0 kg)
Nominal Voltage	24VDC
Certifications	UL 1703 /Hazardous C1D Class 1, Division 2



Power Center

Power Center	EX4-4B118CA-MPT15-24V
Battery Type	Absorbed Glass Mat
Rated Capacity (KwH)	5.6
Battery Type	Absorbed Glass Mat
Controller	MPT15
System Voltage	24VDC
EPA	4 sq-ft / 0.38 sq-m
Loaded Weight	290 lbs / 132 kg
Certifications	UL 1989/File MH-17083



Luminaire - 2RFS-35W16LED



The RFS G2 Fixture has outstanding efficiency and output in either 3000K or 4000K. Color temperature as per ANSI/NEMA bin. Easily set the fixture with the standard integrated bubble level and built-in step adjustments.

A quick-release, tool-less entry, single latch, hinged, removable door opens downward for access.

A bird guard protects against birds and similar intruders.

The surface treatment achieves a minimum of 3000 hours for salt spray resistance in testing performed as per ASTM B117 standard.

LED Module	Typical Delivered Lumens	Typical Wattage	Approx. HID Equivalent	BUG Rating
4,000K, Type 2 Short	4674	35/38	90 - 120W	B1-U0-G1
4,000K, Type 2 Medium	4566	35/38	90 - 120W	B1-U0-G1
4,000K, Type 3 Short	4643	35/38	90 - 120W	B1-U0-G1
4,000K, Type 3 Medium	4499	35/38	90 - 120W	B1-U0-G1
4,000K, Type 4	4444	35/38	90 - 120W	B1-U0-G1
4,000K, Type 5	4711	35/38	90 - 120W	B1-U0-G1
3,000K, Type 2 Short	4410	35/38	90 - 120W	B1-U0-G1
3,000K, Type 2 Medium	4310	35/38	90 - 120W	B1-U0-G1
3,000K, Type 3 Short	4381	35/38	90 - 120W	B1-U0-G1
3,000K, Type 3 Medium	4247	35/38	90 - 120W	B1-U0-G1
3,000K, Type 4	4194	35/38	90 - 120W	B1-U0-G1
3,000K, Type 5	4445	35/38	90 - 120W	B1-U0-G1

Product Matrix - Base System

2RFS-35W16LED-				-M724]-2P150A-TPT16-[EX4-4B118CA-MPT15-24V]-T7.0x200-			
<u>Luminaire</u>	<u>Color Temp</u>	<u>Type</u>	<u>Shielding</u>	<u>Balance of System</u>	<u>Color</u>	<u>Motion</u>	
Two Road Focus Small	3K-3000K 4K-4000K	R2M-Type 2 Medium R2S-Type 2 Short R3M-Type 3 Medium R3S-Type 3 Short 4-Type 4 5-Type 5	HS-House Side Shield NA-No House Side Shield	Constant Current Dimmable Drivers- 700mA- 2 x 150W Mono Solar Module- Adjustable Mount for Optimal Tilt and Pole Integrated Power Supply- 5.6 Kwh AGM Battery Capacity-Stainless Steel Fasteners and Wire Harnesses to fit Tapered 7" Base OD x 20' Pole	BK- Black BZ- Bronze WT- White	MD2- Motion Detector NA-No Motion Detector	

Product Matrix - Pole Assembly

RTS-700E200	-AB-	2NPS-2HH-	H-V
20' Tapered Steel Pole- 7" Base OD 7 Gauge - Includes Anchor Bolts- Full Base Cover and Mounting Tenon	AB-Include Anchor Bolts LAB-No Anchor Bolts	2NPS Fitters for Water Tight PV and Enclosure Wire Ways-2 Hand Holes for Easy Access	FB-Festoon Box for MD2 NA-No Motion Pole Mounted Enclosure Mounted High

