

02/05/2008 Democratic Presidential Primary Results
Democratic Presidential Primary Candidates

	District	1	2	3	4	5	6	7	Absentee	Total	%
Democratic											
Barack Obama		527	490	281	555	508	520	184	69	3134	64.57%
Dennis Kucinich		1	2	0	2	2	1	2	0	10	0.21%
Mike Gravel		1	0	0	1	1	1	0	0	4	0.08%
Bill Richardson		2	0	0	0	0	0	0	0	2	0.04%
John Edwards		2	5	5	3	5	1	3	4	28	0.58%
Chris Dodd		0	2	3	4	4	1	1	0	15	0.31%
Joe Biden		0	0	0	0	2	0	1	1	4	0.08%
Hillary Clinton		184	219	169	202	351	295	131	68	1619	33.35%
Uncommitted		4	7	2	9	4	3	3	6	38	0.78%
Total Votes		721	725	460	776	877	822	325	148	4854	
Total Voters/District				741					148	889	
Absentee/District										0	

* Last

02/05/2008 Republican Presidential Primary Results

Republican Presidential Primary Candidates

	District	1	2	3	4	5	6	7	Absentee	Total	%
<i>Republican</i>											
Rudy Giuliani		1	3	0	0	3	1	0	4	12	1.07%
Fred Thompson		0	1	0	0	0	2	1	1	5	0.44%
Mitt Romney		18	44	57	25	98	123	49	21	435	38.67%
John McCain		12	74	57	38	112	123	57	22	495	44.00%
Duncan Hunter		0	0	1	0	0	0	0	1	2	0.18%
Ron Paul		4	4	14	3	12	8	6	1	52	4.62%
Mike Huckabee		10	9	7	12	18	31	13	3	103	9.16%
Alan Keyes		2	1	0	0	0	0	0	0	3	0.27%
Uncommitted		3	3	1	4	1	1	1	4	18	1.60%
Total Votes		50	139	137	82	244	289	127	57	1,125	
Total Voters/District									57	57	
Absentee/District										0	

* Last

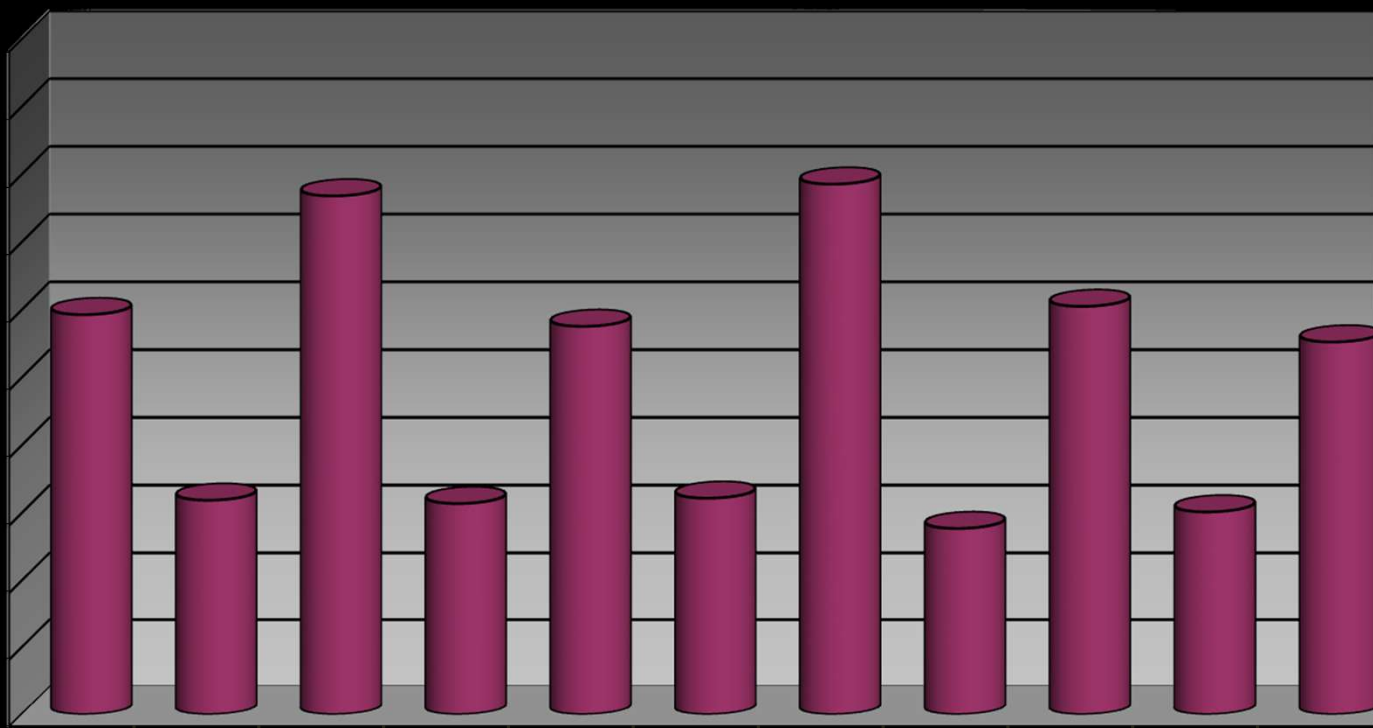
District		DEM Registered Voters	DEM Voted Today	Total DEM % Voting	REP Registered Voters	REP Voted Today	Total REP % Voting
1	L.P. Wilson Center	1,184	721	60.90%	155	50	32.26%
2	JFK School	1,178	725	61.54%	378	139	36.77%
3	Town Hall	753	460	61.09%	336	137	40.77%
4	330 Windsor Avenue Ctr.	1,305	776	59.46%	209	82	39.23%
5	Oliver Ellsworth School	1,494	877	58.70%	724	244	33.70%
6	Poquonock School	1,429	822	57.52%	743	289	38.90%
7	Rainbow Road Firehouse	576	325	56.42%	343	129	37.61%
Absentee			148			57	
Total		7,919	4,854	61.30%	2888	1,127	39.02%

Previous Year Turnouts

	<i>Registered Voters</i>	<i>Actual Voters</i>	<i>% Voting</i>
1998	16,397	9,737	59.38%
1999	16,185	5,178	31.99%
2000	17,449	13,419	76.90%
2001	17,325	5,458	31.50%
2002	17,289	9,967	57.65%
2003	17,022	5,497	32.29%
2004	18,899	14,932	79.01%
2005	18,333	5,191	28.32%
2006	18,168	11,010	60.60%
2007	17,798	5,386	30.26%
2008	10,807	5,981	55.34%

**2008 figures only reflect registered
Dem or Rep Voters**

100%
90%
80%
70%
60%
50%
40%
30%
20%
10%
0%



■ Voter Turnout 59.38% 31.99% 76.90% 31.50% 57.65% 32.29% 78.64% 27.82% 60.60% 30.26% 55.34%